



BORE WATER PUMP CAPABILITIES

Dynapumps can design, install, commission, and maintain complete bore pump systems, including submersible pumps, discharge pipework and controls.

We have the capability to supply:

- Bore pump packages for mine dewatering, irrigation and municipal supply
- Permanent, fixed solution or a temporary, mobile system can be offered
- Generators and Control Panels to suit all electrical requirements
- Fabricated Pipework including control valves and instruments
- Installation and Commissioning
- 2D and 3D Digital drawing documentation

Dynapumps can customise a dewatering package to suit every operational need including unique specifications and site specific requirements

What Dynapumps offers you:

Site Specific Packaging

Unique packaging to suit site travel requirements such as, overseas travel(ship) and remote access(unsealed road) transport.



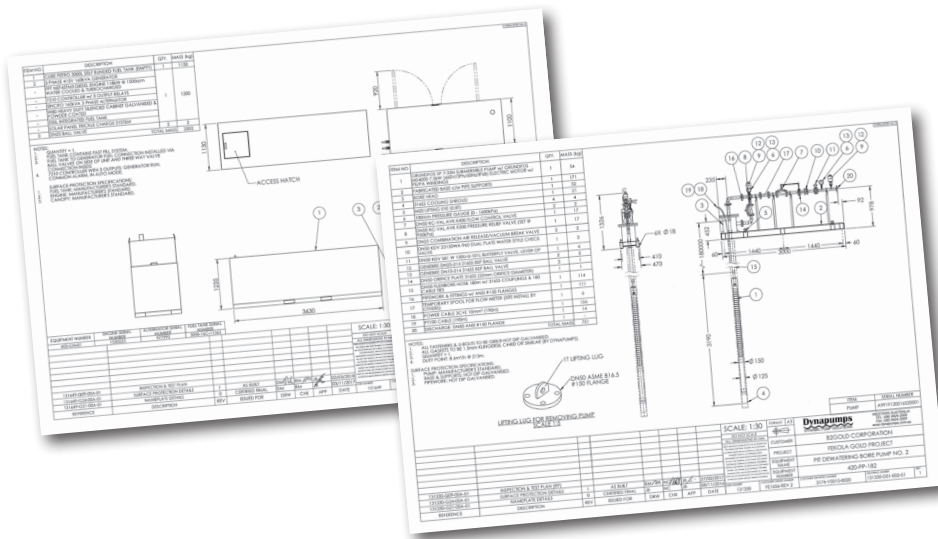
Site Specific Assembly

When customers have large projects and multiple pumping sites, we have the capability to supply pre-assembled ready for installation crews – This is especially common for overseas projects that have limited site experience/knowledge.

Standard Welding Procedures

All pipework has a minimum welding procedure so that all pipework has a consistent quality and tractability throughout the fabrication stage, this also includes hydrostatic testing of all pipework before assembly.





Documentation

All pump packages are assisted by the latest in 3D drafting technology.

The use of this technology results in increased accuracy which reduces wasted time and materials, saving you money.

Unique Fluid Applications

All pump packages are design around the specific application of fluid on the project.

We have some existing customers that have very aggressive water that requires certain materials and modifications away from standard “box products” that our competitors offer. Submersible cooling shrouds are one example that can be made in Duplex Stainless Steel to withstand hyper-saline water.



Dynapumps have the capabilities to design and supply these in full and half-length sizes.



Installation and Commissioning

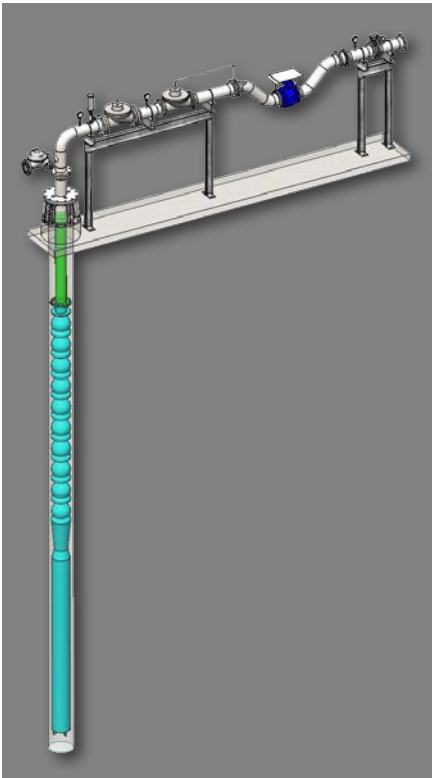
All pump packages can be supplied with a complete “turnkey” service to the customer’s requirements. This involves installation can involve the primary services:

- Pump Crew Technicians
- Commissioning Technicians
- Electrician’s
- Lifting Equipment(slings, chains)
- Cranes and Other Machinery
- Site Pipework Modifications
- Delivery to Site
- QA Documentation or Site Specific Requirements

Bore Water Packages

Our complete dewatering package can include (but not limited to) the following:

- Submersible pumps
- Flexible rising mains
- Fibreglass rigid pipe (FRP)
- Discharge Head-works in Stainless Steel or Galvanised Steel
- Submersible cables, screened or unscreened
- Pontoon's with walkways for accessibility
- Generators
- Bunded fuel tanks
- Switchboards
- HDPE Pipeline
- Control panels
- SCADA Systems
- Telemetry
- Energy and Power Management Systems
- Mobile solutions (skid, trailer, truck mounted)



Dynapumps®
BUILDING FOR LIFE

Contact us Australia-wide

- ☎ 1300 788 579
- ✉ sales@dynapumps.com.au
- 🌐 www.dynapumps.com.au

For more information and to request a quote, contact one of the Dynapumps offices:

Perth, WA

88 Belgravia Street,
Belmont, WA 6104

Unit 3, 94 Belgravia Street,
Belmont WA 6104
Phone: +61 8 9424 2000

Melbourne, VIC

Unit 5/39 Heyington Ave
Thomastown, VIC 3074
Phone: +61 3 9464 3039

Brisbane, QLD

Unit 7/ 14 Hopper Ave
Ormeau, QLD 4208
Phone: +61 7 5546 7777

Sydney, NSW

Unit 5 / 6 Stanton Road,
Seven Hills, NSW 2147
Phone: +61 2 9624 7888

Santiago

Nueva Tajamar 481, Torre
Norte, WTC, Office 2004,
Las Condes, Santiago, Chile

Concepcion

Camino Los Carros 1955,
Bodega 10, Modulo 2,
"Megacentro Los Carros"
Comuna de Concepcion.
Chile